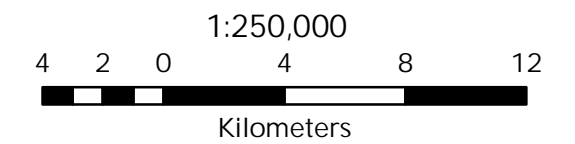


St. Lawrence River (Cornwall) Area of Concern



Map 3 Species Tracked By NHIC

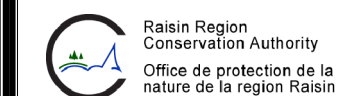
- Sensitive Species
- A Lichen
- A Moss
- Bee-balm
- Puttyroot
- Prickly Bog Sedge
- Long Sedge
- A Hawthorn
- Brainerd's Hawthorn
- Caughuawaga Hawthorn
- Pale Great Club-rush
- Grass-leaved Water-plantain
- Halberd-leaved Tear-thumb
- Eastern Prairie Fringed-orchid
- Bog Elfin
- Green-striped Darner
- Great Black-backed Gull
- Common Gray Fox
- Cutlip Minnow
- Round Goby

This map is for illustrative use only. Do not rely on it as being a precise indicator of routes, locations of features, nor as a guide to navigation. This map was originally produced in colour and may not accurately represent the original purpose of the map if reproduced in black and white.

The source/base data is known to be the best available information provided through the Ontario Geospatial Data Exchange and by Ontario Ministry of Natural Resources.

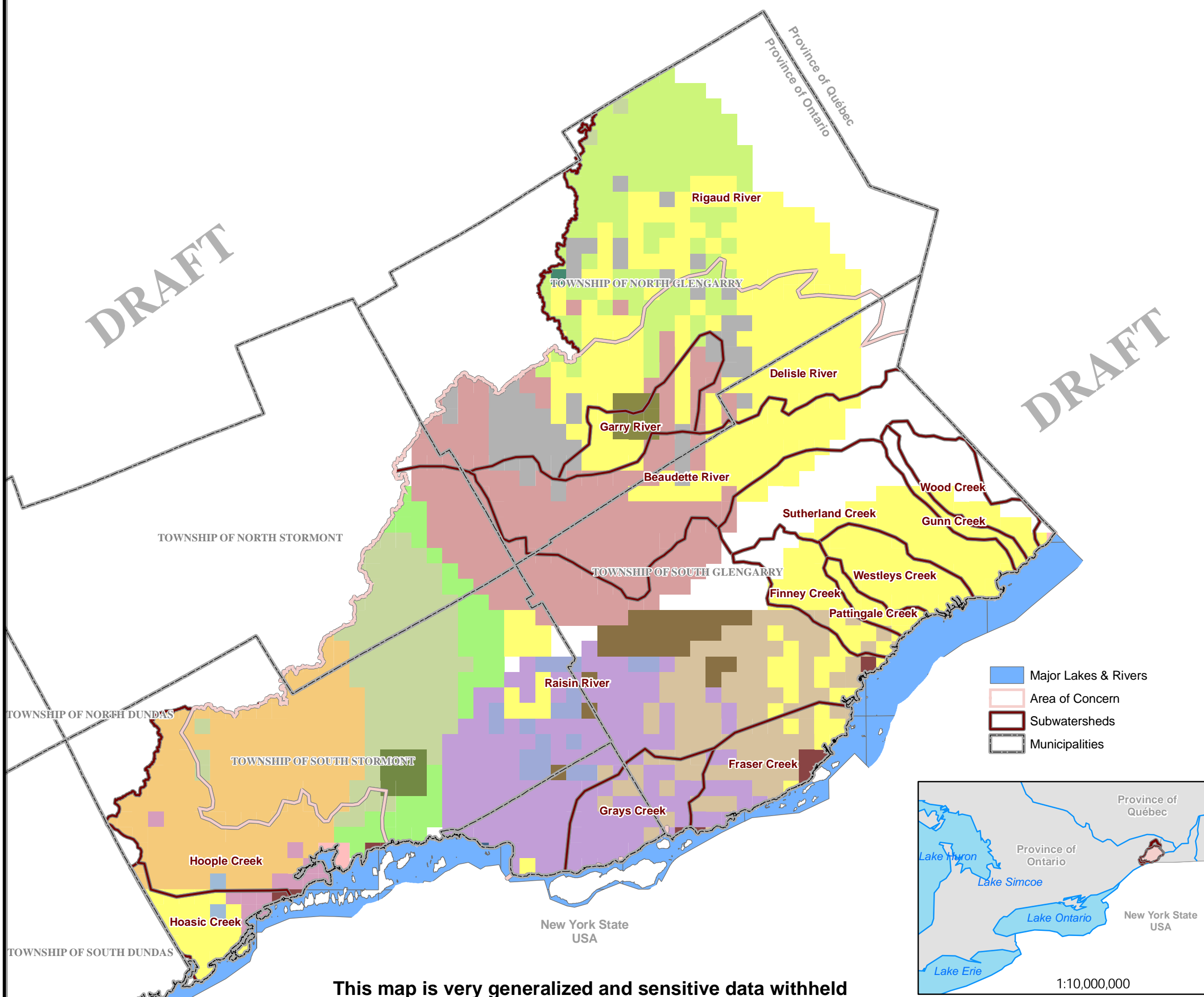
Produced by Raisin Region Conservation Authority under license with the Ontario Ministry of Natural Resources. Copyright (c) Queen's Printer 2009.

Produced by: D. Hamilton
Date Produced: August 7, 2009
Produced for: NHS Technical Report 2009
Project: Feeding and Nesting Sites.mxd

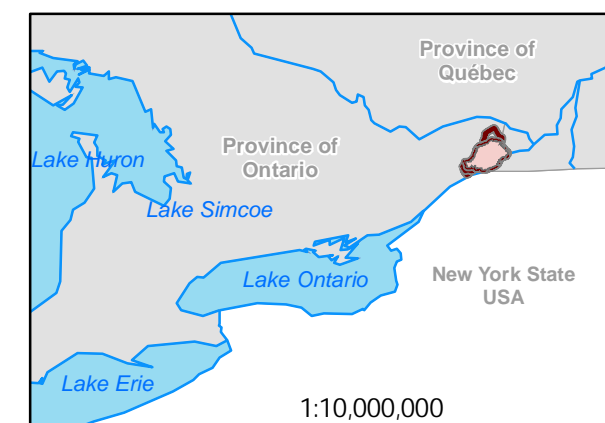


DRAFT

DRAFT



- Major Lakes & Rivers
- Area of Concern
- Subwatersheds
- Municipalities



This map is very generalized and sensitive data withheld